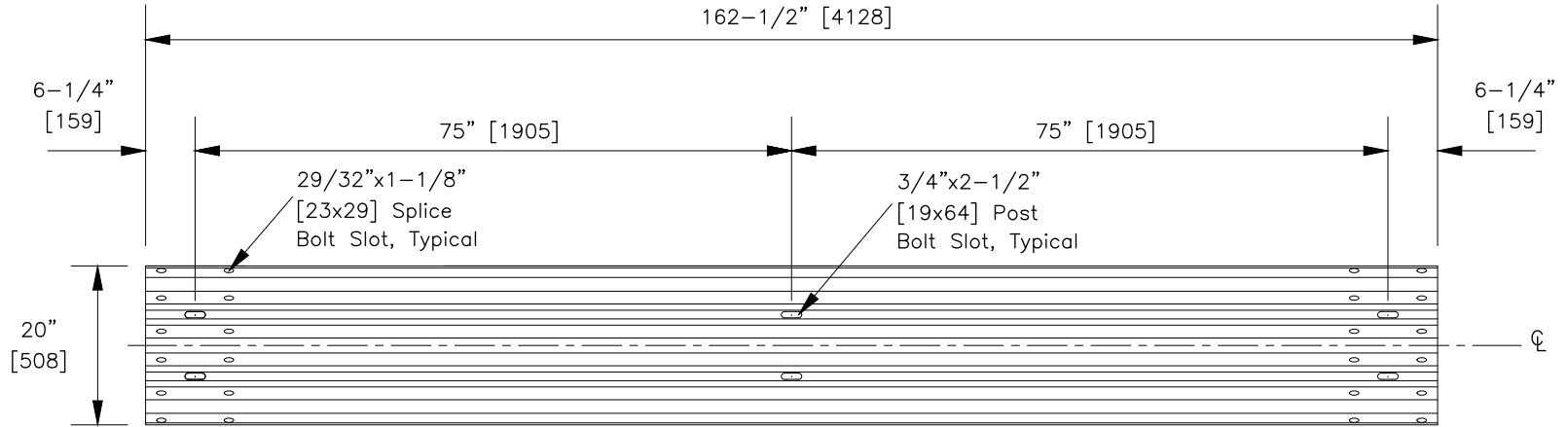
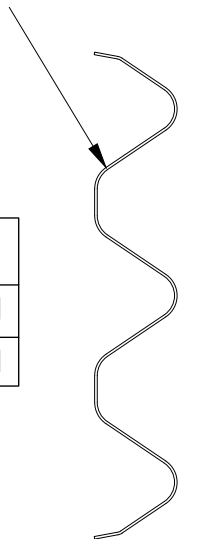


2-SPACE THREE-BEAM GUARDRAIL



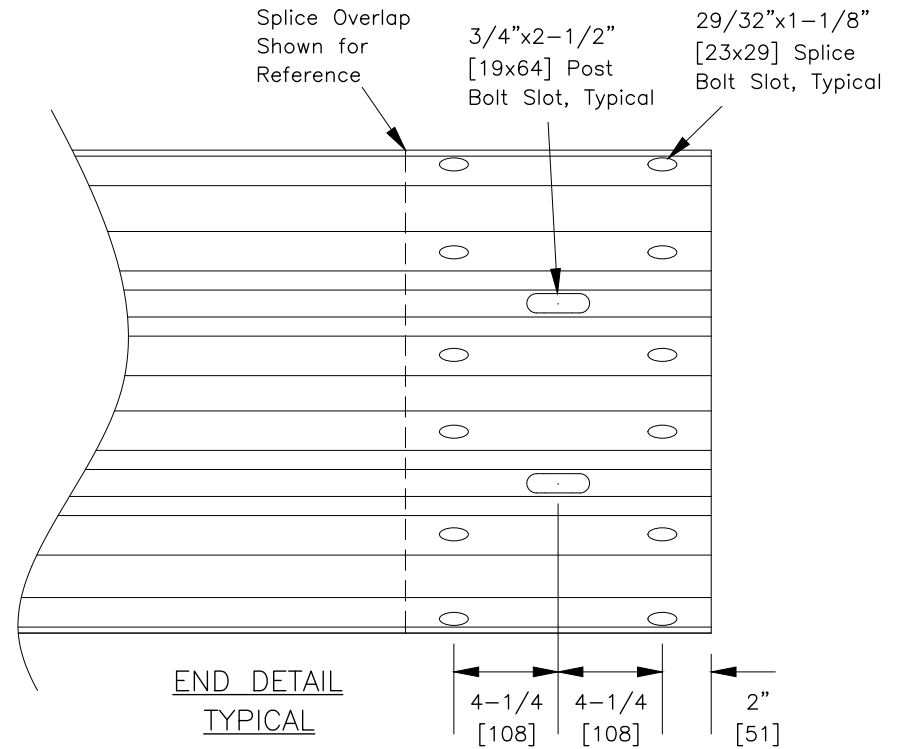
FRONT ELEVATION VIEW

See Sheet 3 of 3 for
Cross-Section Dimensions



SECTION VIEW

Designator	Base Metal Thickness
RTM02a	12 Gauge [2.67]
RTM02b	10 Gauge [3.43]



END DETAIL
TYPICAL

SPECIFICATIONS

Corrugated sheet steel beams shall conform to the current requirements of AASHTO M180. The section shall be manufactured from sheets with a nominal width of 29.5" [750]. RTM02a shall conform to AASHTO M180 Class A and RTM02b shall conform to Class B. Inertial properties are calculated for the whole cross-section without a reduction for holes or slots.

Designator	Base Metal Thickness Gauge [mm]	Area in ² [10 ³ mm ²]	I _x in ⁴ [10 ⁶ mm ⁴]	I _y in ⁴ [10 ⁶ mm ⁴]	S _x in ³ [10 ³ mm ³]	S _y in ³ [10 ³ mm ³]
RTM02a	12 [2.67]	3.10 [2.0]	3.84 [1.6]	--	2.22 [36.4]	--
RTM02b	10 [3.43]	4.03 [2.6]	4.80 [2.0]	--	2.87 [47.0]	--

Dimensional tolerances not shown or implied are intended to be those consistent with the proper functioning of the part, including its appearance and accepted manufacturing practices.

INTENDED USE

RTM02a-b guardrail section is used in various Thrie-beam guardrail systems.

CONTACT INFORMATION

Task Force 13 (TF13)
a Non-Profit Association
<https://TF13.org>

2-SPACE THRIE-BEAM GUARDRAIL

RTM02a-b

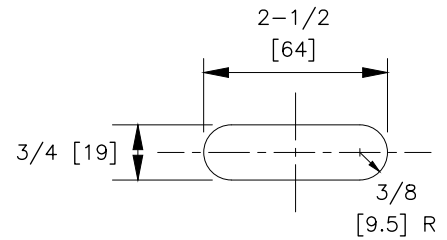
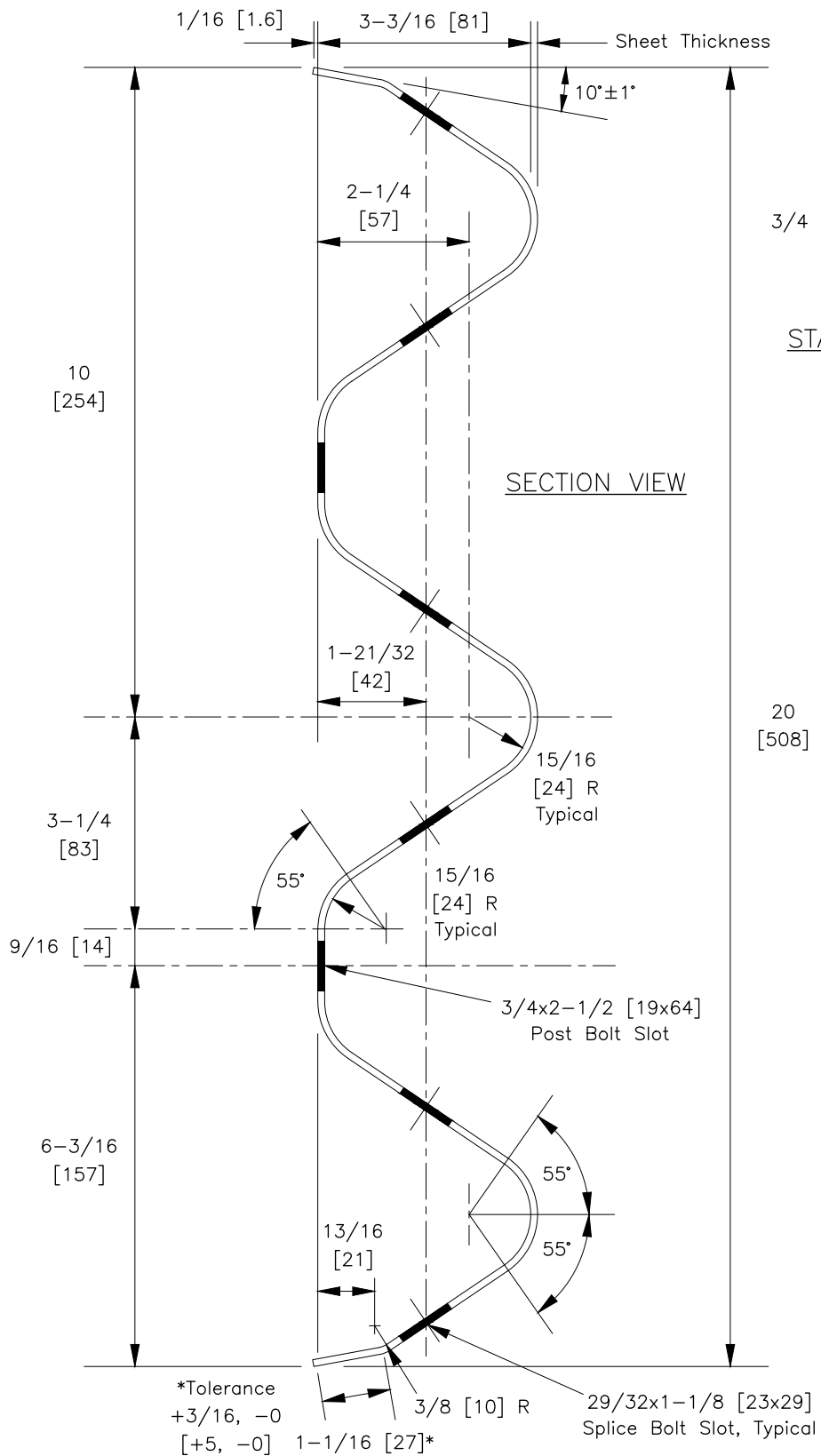
SHEET NO.

DATE

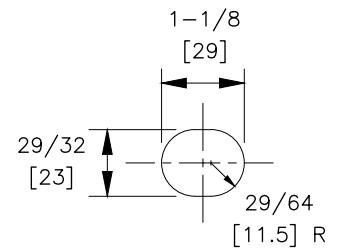
2 of 3

3/17/2025





STANDARD POST BOLT SLOT



STANDARD SPLICE
BOLT SLOT

20
[508]

2-SPACE THRIE-BEAM GUARDRAIL



RTM02a-b

SHEET NO.

DATE

3 of 3

3/17/2025