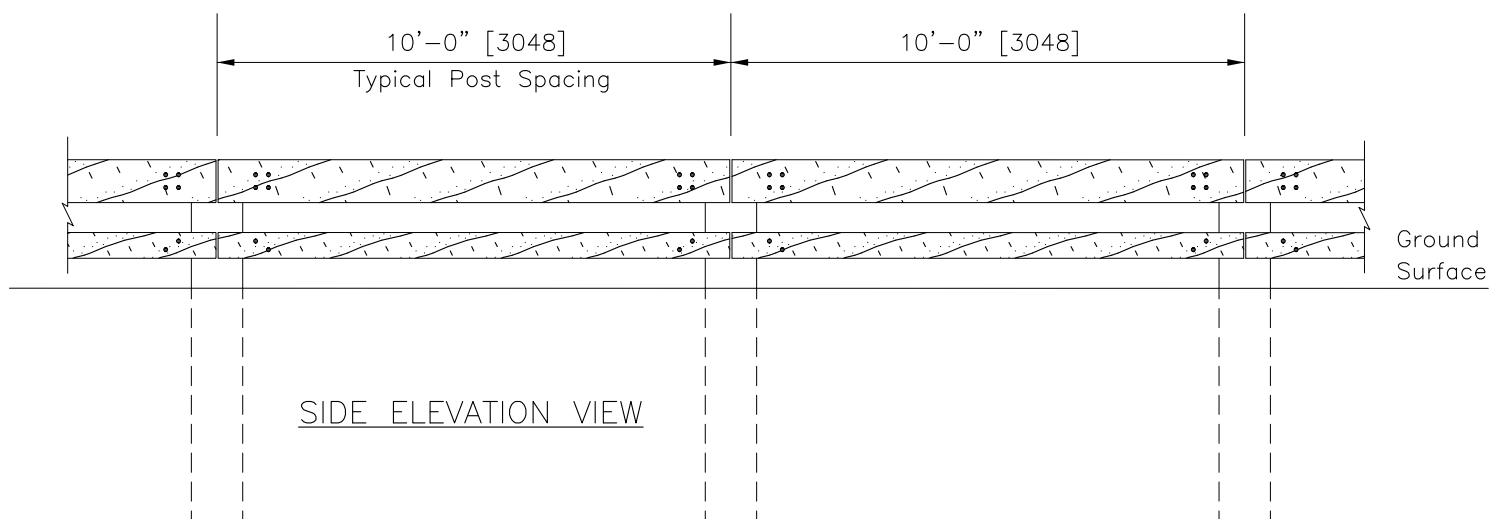
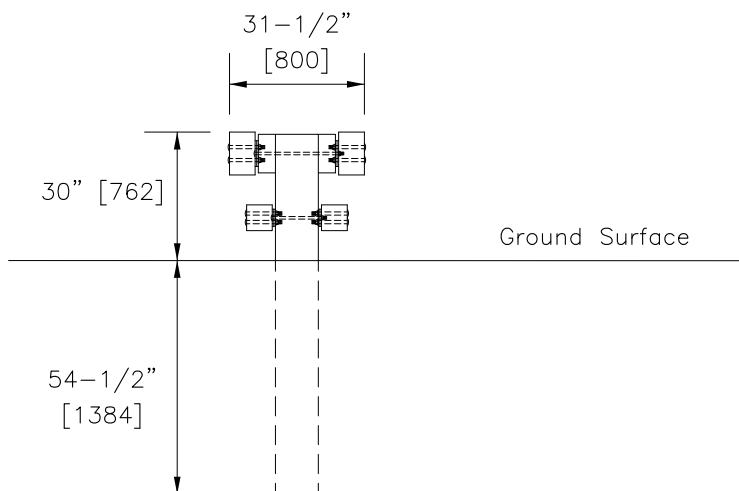


PLAN VIEW



SIDE ELEVATION VIEW



SECTION VIEW

STEEL-BACKED TIMBER GUARDRAIL (SBTG)–MEDIAN–TYPE A



SGM46a

SHEET NO.

DATE

1 of 4

5/5/2023

INTENDED USE

The **Steel-Backed Timber Guardrail (SBTG) - Median - Type A** is a visually appealing option for median barriers on National Park Service roadways and other scenic roads. Designed with a rub-rail, this SBTG is intended to minimize the risk of wheels getting caught on the posts while seamlessly blending into the surrounding environment. The barrier has been successfully tested to ensure its strength and safety, meeting the MASH 2016, Test Level 3 (TL-3) standards for longitudinal barriers as shown in crash tests conducted at the FHWA Federal Outdoor Impact Laboratory (FOIL) (Tests 22007 and 22009). This barrier not only provides a visually pleasing solution but also delivers the necessary strength and safety to protect vehicles in the event of a collision.

MATERIALS and CONSTRUCTION NOTES

1. Use weathering steel for all structural steel and fastener hardware as specified.
2. Place terminal section on both approach and trailing ends of barrier installations.
3. Drawings not to scale. All dimensions are in inches (“), and [millimeters].

ELIGIBILITY

Federal Highway Administration (FHWA) Eligibility has not been pursued.

REFERENCES

<Project Report citation>

CONTACT INFORMATION

Center for Collision Safety and Analysis (CCSA)
College of Science, George Mason University,
4087 University Drive
Fairfax, VA 22030
Phone (703) 993-4694
<https://www.ccsa.gmu.edu/>

Steel-Backed Timber Guardrail (SBTG) - Median - Type A

SGM46a

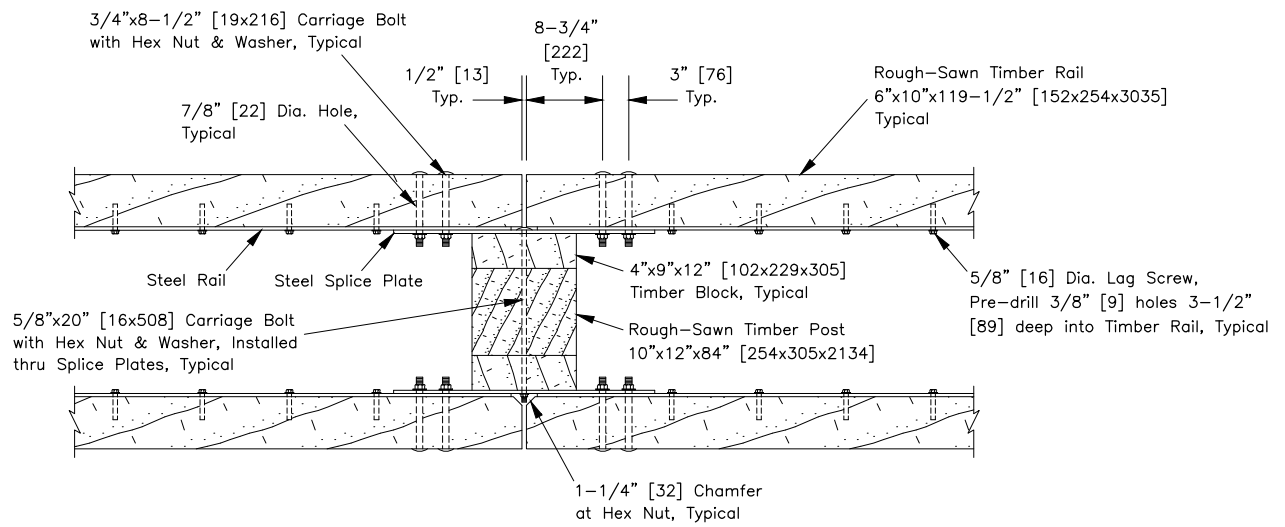
SHEET NO.

DATE

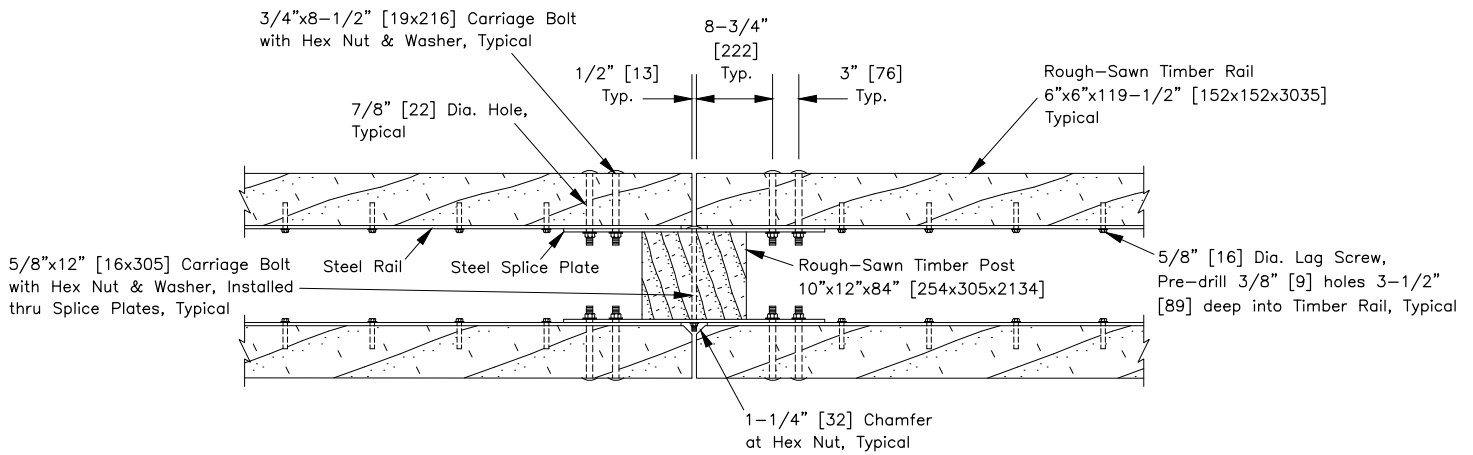
2 of 4

5/5/2023

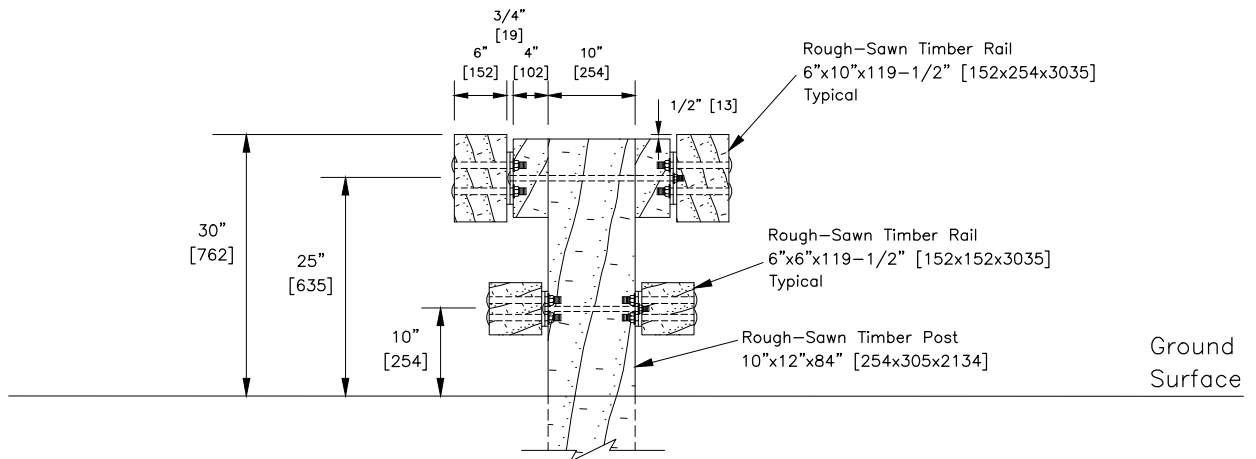




MAIN RAILS TO POST CONNECTION – PLAN VIEW

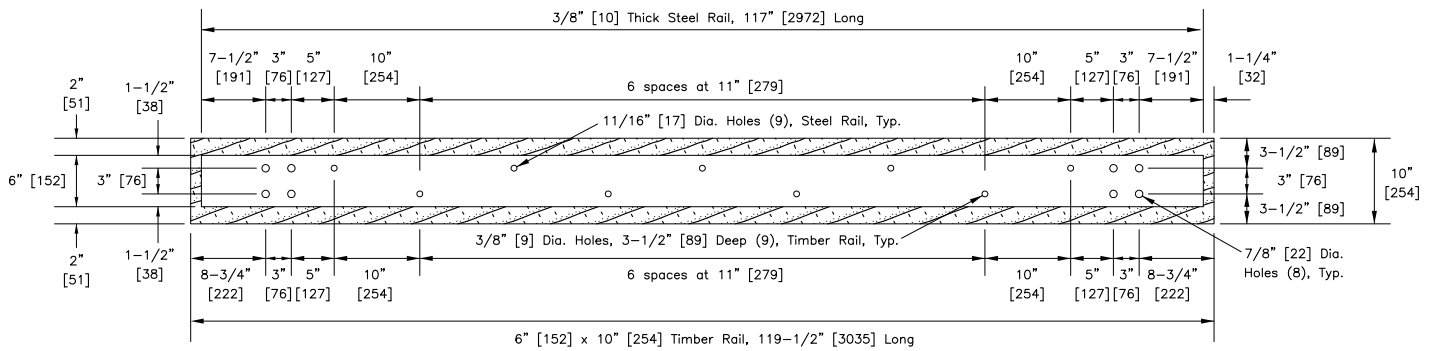


RUB RAILS TO POST CONNECTION – PLAN VIEW

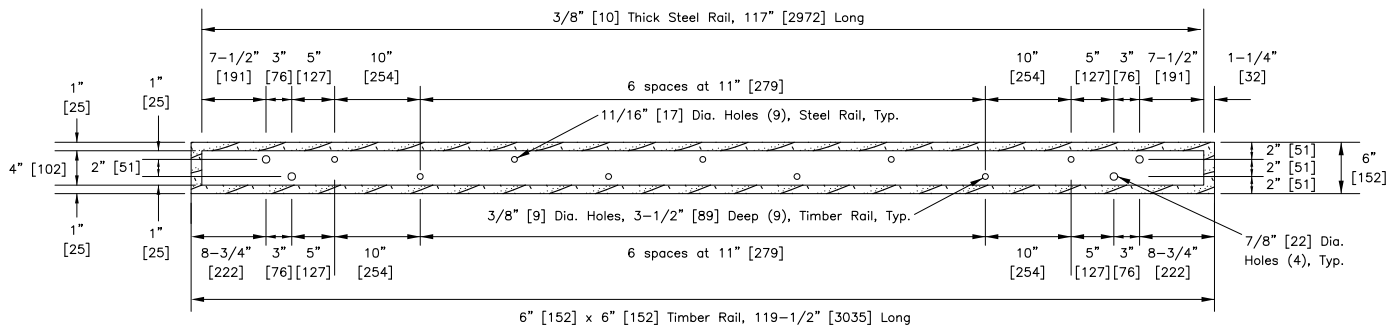


CROSS SECTION VIEW

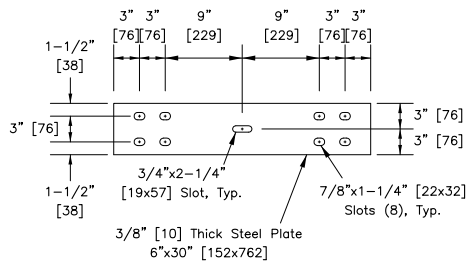
STEEL-BACKED TIMBER GUARDRAIL (SBTG)–MEDIAN–TYPE A



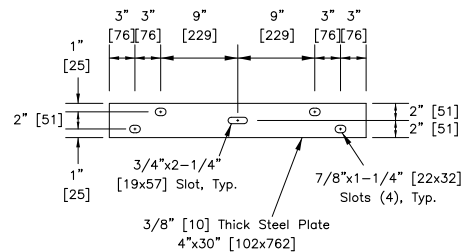
MAIN RAIL HOLE PATTERN – ELEVATION VIEW



RUB RAIL HOLE PATTERN – ELEVATION VIEW



MAIN RAIL SPLICE PLATE



RUB RAIL SPLICE PLATE

STEEL-BACKED TIMBER GUARDRAIL (SBTG)–MEDIAN–TYPE A