

ENERGY ABSORPTION
SYSTEMS INC

SC102

SHEET NO.

1 OF 2

REF NO.

HI-DRO[®] CELL CLUSTER

1994

BACKUP CAN BE STEEL OR
CONCRETE – CONCRETE SHOWN
(WIDTH TO BE AT LEAST HALF
THE UNIT LENGTH)

LENGTH VARIES DEPENDING
ON DESIGN SPEED FOR SITE
(MAX. SPEED – 72.4 km/hr
MAX. LENGTH – 3 810)

8 HOLE VINYL CAP
WITH EVAPORATION
CONTROL COVER

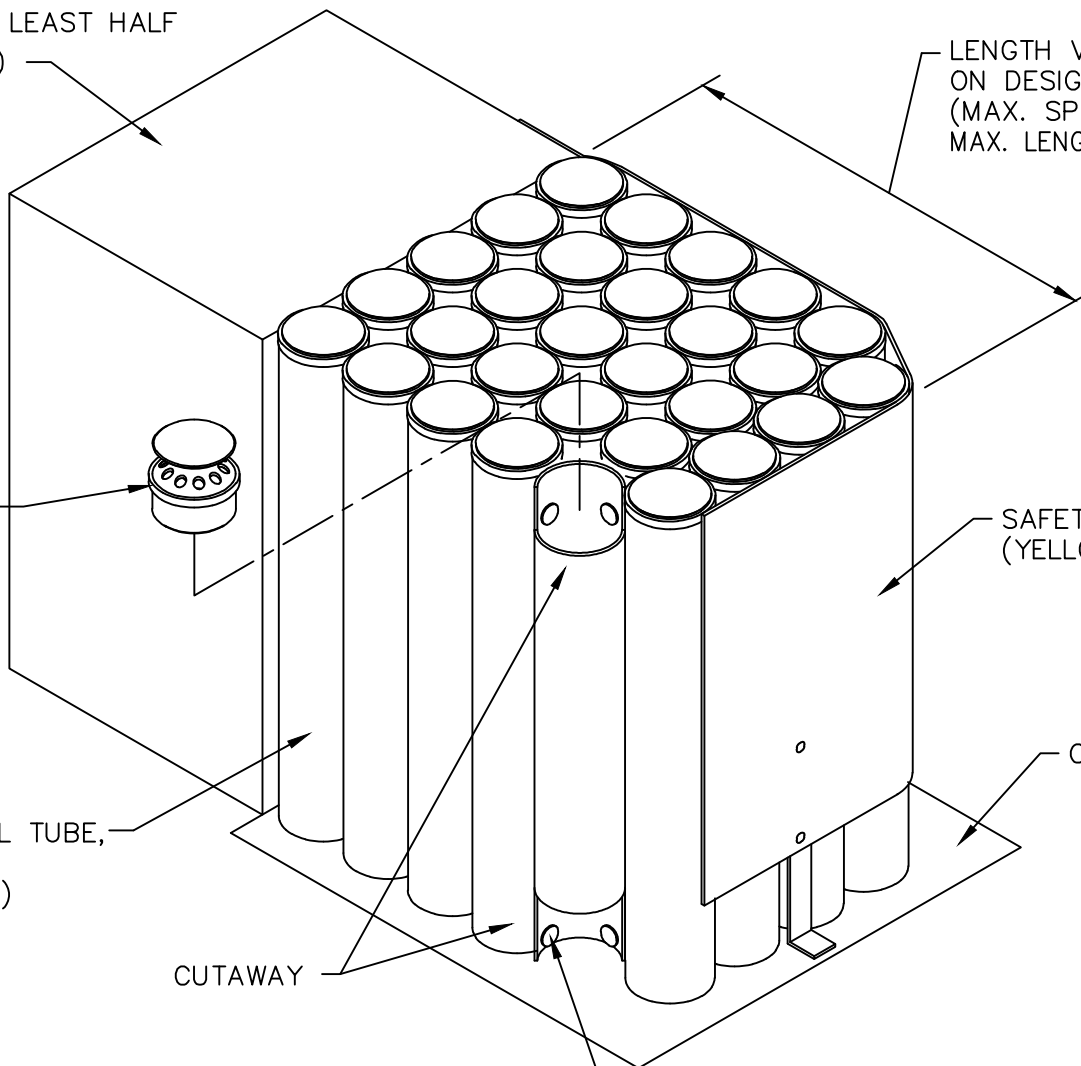
SAFETY-FLEX BELT
(YELLOW OR GRAY)

CONCRETE PAD

WATER FILLED VINYL TUBE,
991 TALL
(YELLOW OR BLACK)

CUTAWAY

SCREW – USED TO FASTEN CELLS
TOGETHER AT TOP AND BOTTOM



DESCRIPTION

The Hi-Dro Cell Cluster System is specifically designed for areas where space is limited and traffic speeds do not exceed 72 kph. These hazards include tollbooths, utility poles, railroad crossing signals, traffic lights, etc. Like the Hi-Dro Sandwich System, the smaller cell cluster unit also features extraordinary reusability.

The unit consists of water and antifreeze filled cells fastened together in a cluster which is wrapped with a flexible belt. The variety of available cluster configurations is virtually limitless.

- Gating
- Non-Redirecting
- Pocketing
- Bidirectional or Unidirectional
- Very High Reusability

Length = varies with design
Width = varies with design
Design Speed = variable up to 72 kph

CONTACT INFORMATION

ENERGY ABSORPTION SYSTEMS, INC.

One East Wacker Drive
Chicago, Illinois 60601
Phone (312) 467-6750

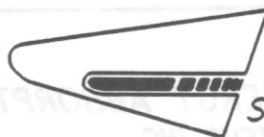
HI-DRO[®] CELL CLUSTER SYSTEM

SCI02

SHEET NO.

REF. NO.

2 of 2



ENERGY ABSORPTION
SYSTEMS, INC.