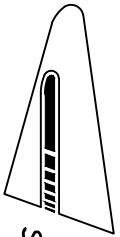


1994

# TREND® SYSTEM



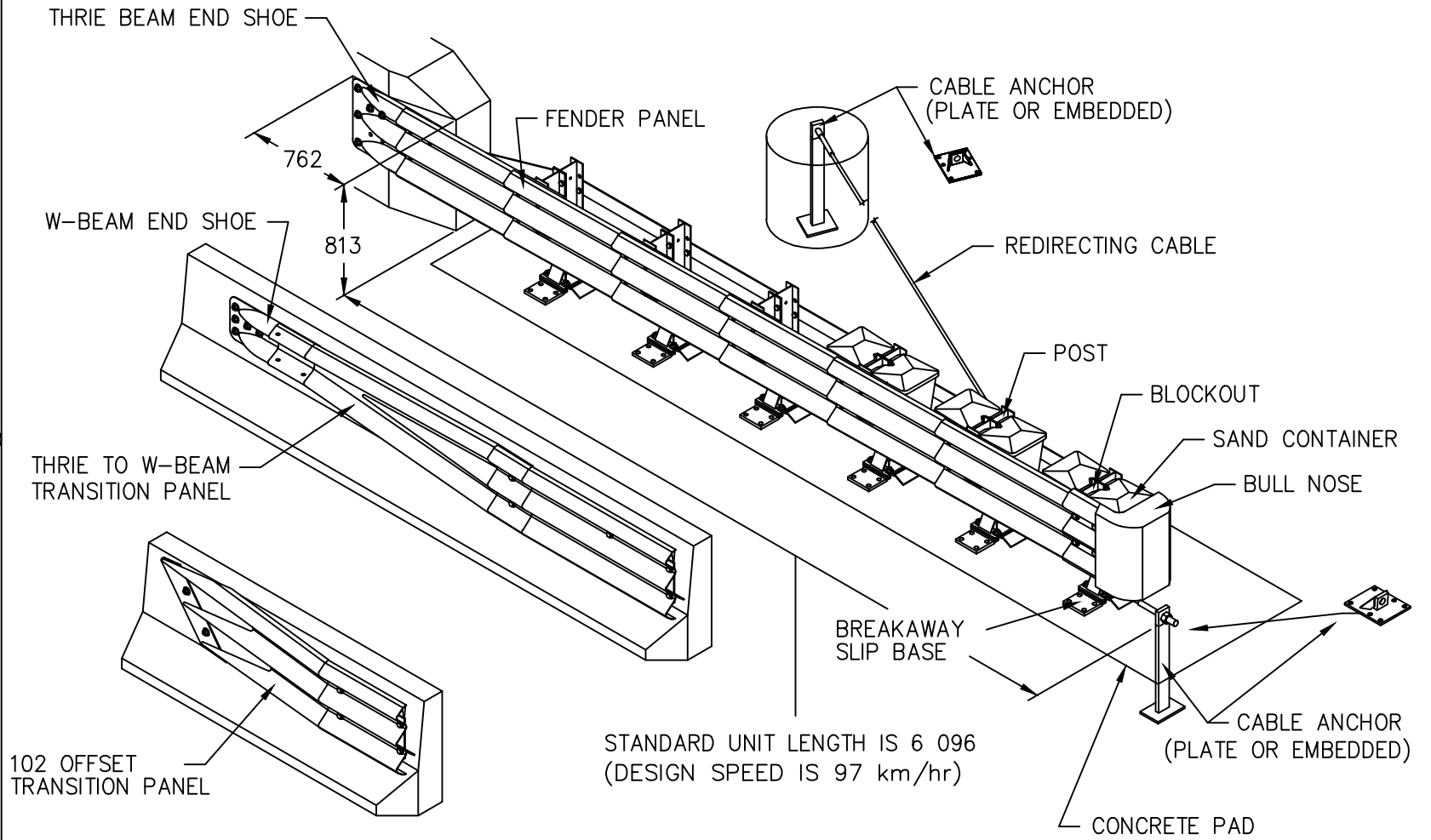
ENERGY ABSORPTION  
SYSTEMS INC

SET01

SHEET NO.

1 OF 2

REF NO.



## DESCRIPTION

The TREND System does two important jobs: it serves as both an end treatment for rigid barriers and a transition section, thereby protecting errant motorists from the deadly hard point on rigid concrete ends.

In applications where the standard section of guardrail can be eliminated, the TREND System can protect motorists while reducing the required length of the barrier. Barrier ends, bridge rails, abutments, and railroad signals can be shielded in as little as 6096 mm without the risk of vaulting, ramping, or spearing.

The TREND System consists of telescoping fender panels, support posts with slip bases, a redirecting cable, a tension strap, and sand-filled boxes for dissipating collision energy. During head-on impacts, the TREND System directs the nose of the vehicle away from the hard point. For angle impacts to side of system, the vehicle is redirected back onto the roadway and away from the hazard.

The TREND System has a low initial cost, permits short installation lengths while still protecting motorists, and is reusable.

• Gating	Length =	6096 mm
• Redirecting	Width =	457 mm (excluding cable)
• Non-pocketing	Mass =	522 kg
• Unidirectional	Design Speed =	97 kph
• High Reusability		

## CONTACT INFORMATION

ENERGY ABSORPTION SYSTEMS, INC.

One East Wacker Drive  
Chicago, Illinois 60601  
Phone (312) 467-6750

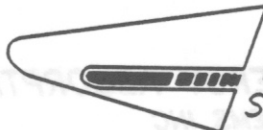
## TREND<sup>®</sup> SYSTEM

SET01

SHEET NO.

REF. NO.

2 of 2



ENERGY ABSORPTION  
SYSTEMS, INC.