

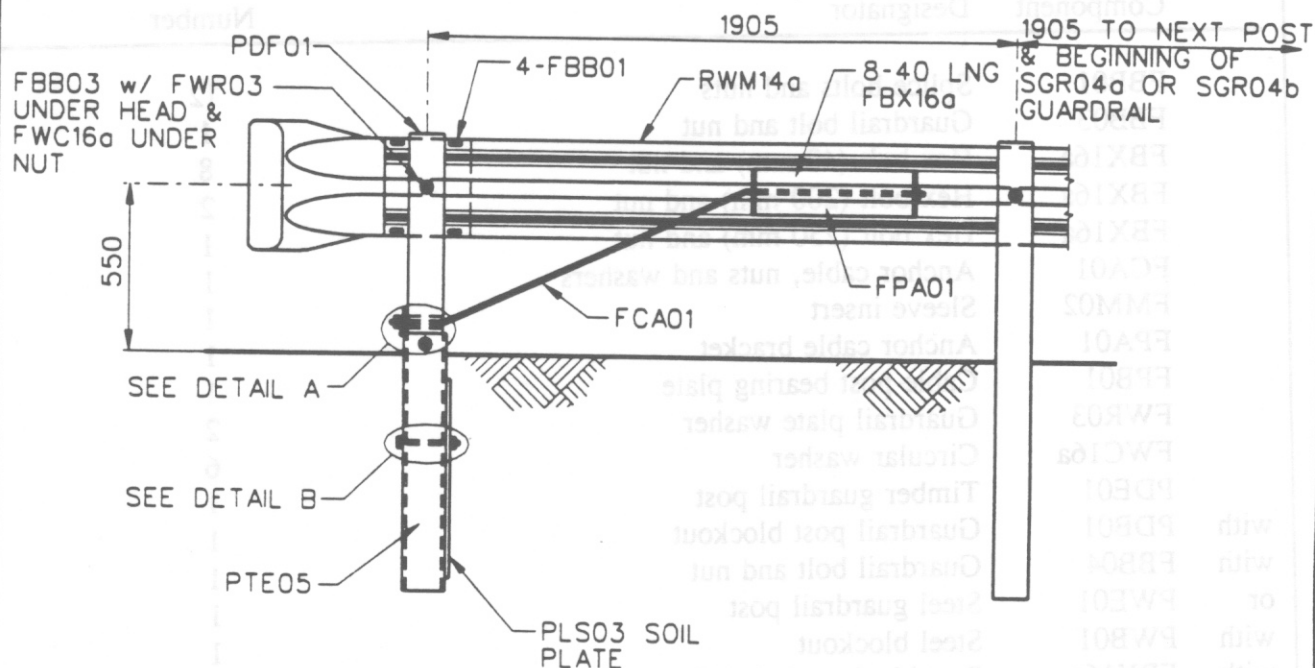
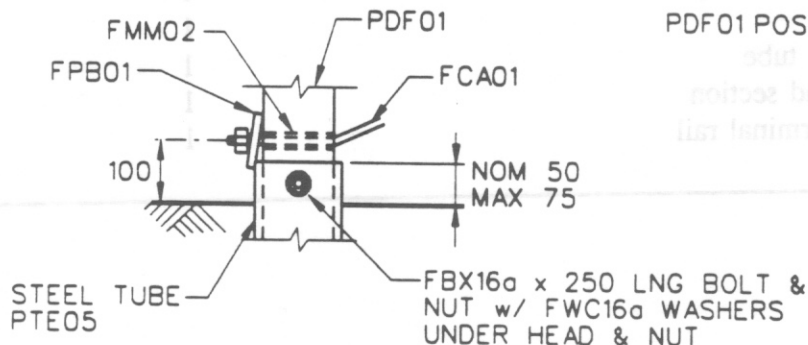
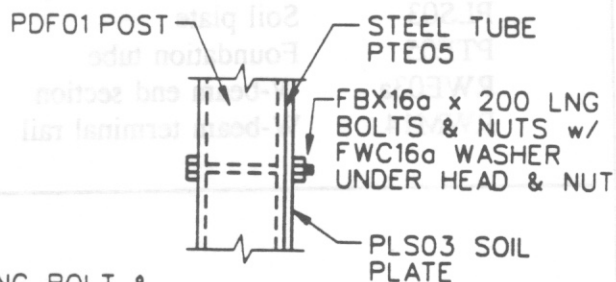
RWE03a

PLS03

FCA01

FPA01

PDB01 ATTACHED TO PDE01 w/ FBB04 w/ FWR03
UNDER HEAD & FWC16a UNDER NUT (SGR04b) OR
PWB01 ATTACHED TO PWE01 w/ 2-FBX16a x 40
LNG & FBB02 w/ FWR03 UNDER HEAD (SGR04a)

PLAN**ELEVATION****DETAIL A****DETAIL B**

1994

TRAILING END TERMINAL-FOUNDATION TUBE OPTION**SEW02a**

SHEET NO.

REF. NO.

1 of 2

INTENDED USE

This terminal should only be used on the trailing end of the SGR04 a strong-post w-beam guardrail to provide anchorage for the system. This is not a crashworthy terminal when struck head-on since it is not meant to breakaway. If the foundation tube and soil plate are driven into the soil, proper care should be taken to insure that the soil plate fasteners are not broken during the driving process.

COMPONENTS

Unit Length = 3810

Component	Designator	Number
	FBB01	Splice bolts and nuts
	FBB03	Guardrail bolt and nut
	FBX16a	Hex bolt (40 mm) and nut
	FBX16a	Hex bolt (200 mm) and nut
	FBX16a	Hex bolt (250 mm) and nut
	FCA01	Anchor cable, nuts and washers
	FMM02	Sleeve insert
	FPA01	Anchor cable bracket
	FPB01	Cable-post bearing plate
	FWR03	Guardrail plate washer
	FWC16a	Circular washer
	PDE01	Timber guardrail post
with	PDB01	Guardrail post blackout
with	FBB04	Guardrail bolt and nut
or	PWE01	Steel guardrail post
with	PWB01	Steel blackout
with	FBX16a	Post-blackout bolt (40 mm) and nut
with	FBB02	Guardrail bolt and nut
	PDF01	Breakaway timber post
	PLS03	Soil plate
	PTE05	Foundation tube
	RWE03a	W-beam end section
	RWM14	W-beam terminal rail

TRAILING END TERMINAL-FOUNDATION TUBE OPTION

SEW02a

SHEET NO.

REF. NO.

2 of 2

