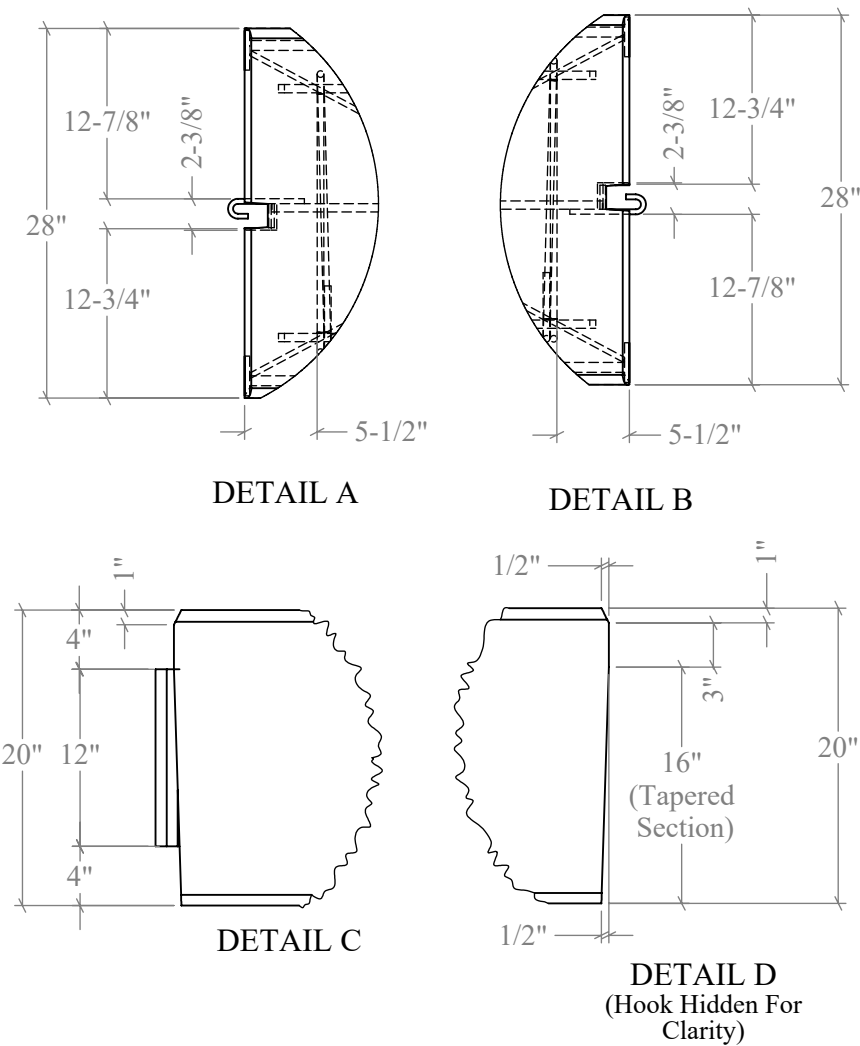
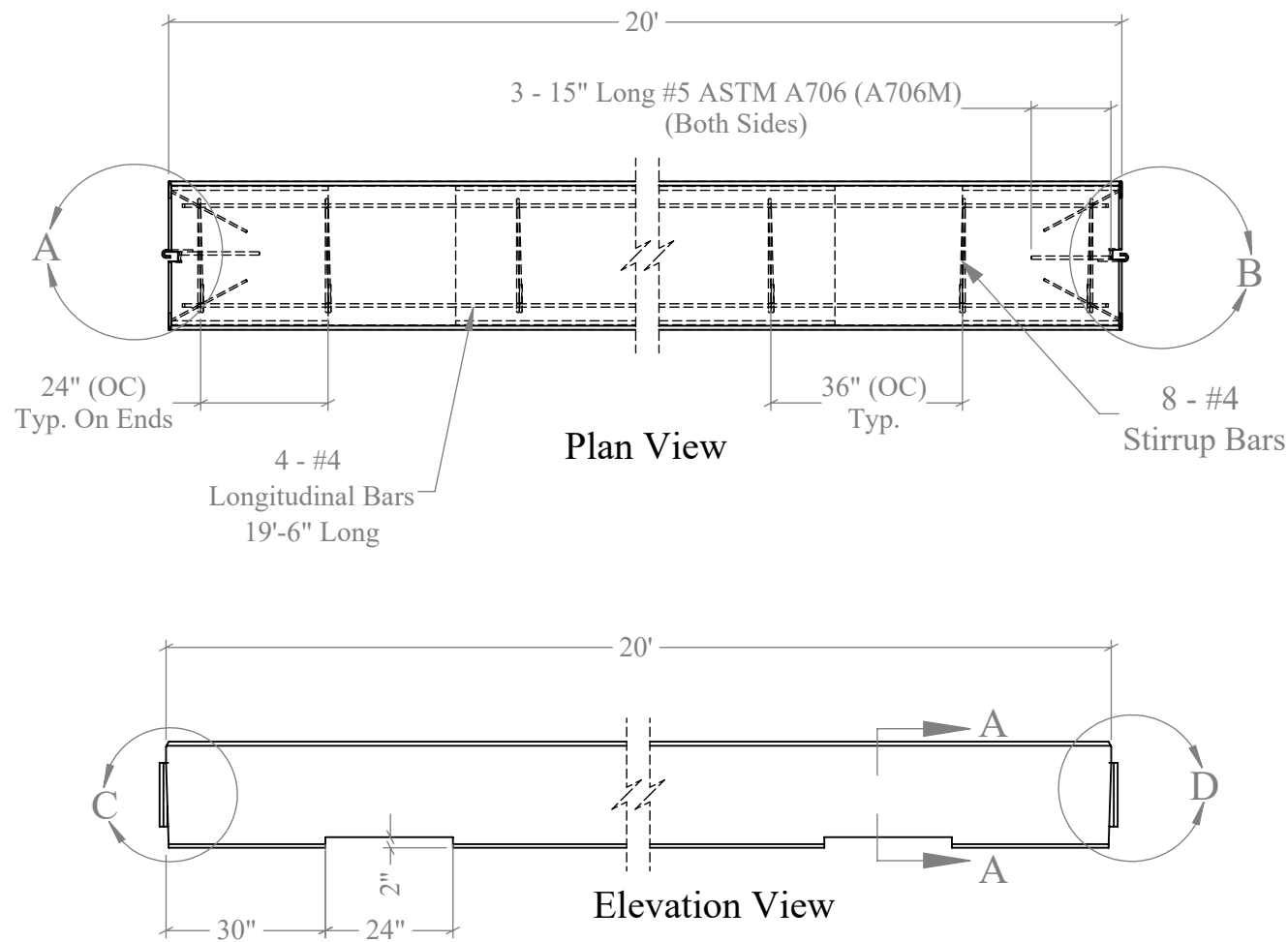


J-J Hook Low Profile Concrete Barrier (LPCB)



General Notes And Specifications

Specifications:
AASHTO: American Association of Highway and Transportation Officials
AISC: American Institute of Steel Construction
ASNT: American Society for Nondestructive Testing
ASTM E165 Standard Test Method For Liquid Penetrant Examination

Materials:

Concrete: Class AA concrete 4000 PSI (34 MPa) minimum compressive strength in 28 days.

Reinforcing:

Rebar: ASTM A706 (A706M) grade 60 OR dual certified meeting ASTM A615 GR. 60 rebar (rebar welded to steel).
ASTM A615 GR. 60.
Producers option to use lifting devices, chairs, spacers, or miscellaneous rebar to secure cage in form & handling as needed.

Steel: ASTM A-36 (A-36M) minimum (plain/mill finish).
Optional - galvanize J-J Hooks as required

Welding: AWS D1.1 Structural Welding Code-Steel
AWS D1.4 Structural Welding Code-Reinforcing Steel

Tolerances:
Connector Location +/- 1/16" (1.6mm)
Connector Plate Size + 1/8" (3.2mm)
Barrier Length + 1/4" (6.4mm) or per agency product specification
Min 1-1/4" steel cover

Design: MASH TL-2

Rebar lengths shown will vary depending on overall barrier length

Drainage slots may vary in size and location depending on state DOT standards

Installation: Barrier segment ends must be installed in closed position as shown on sheet 2.

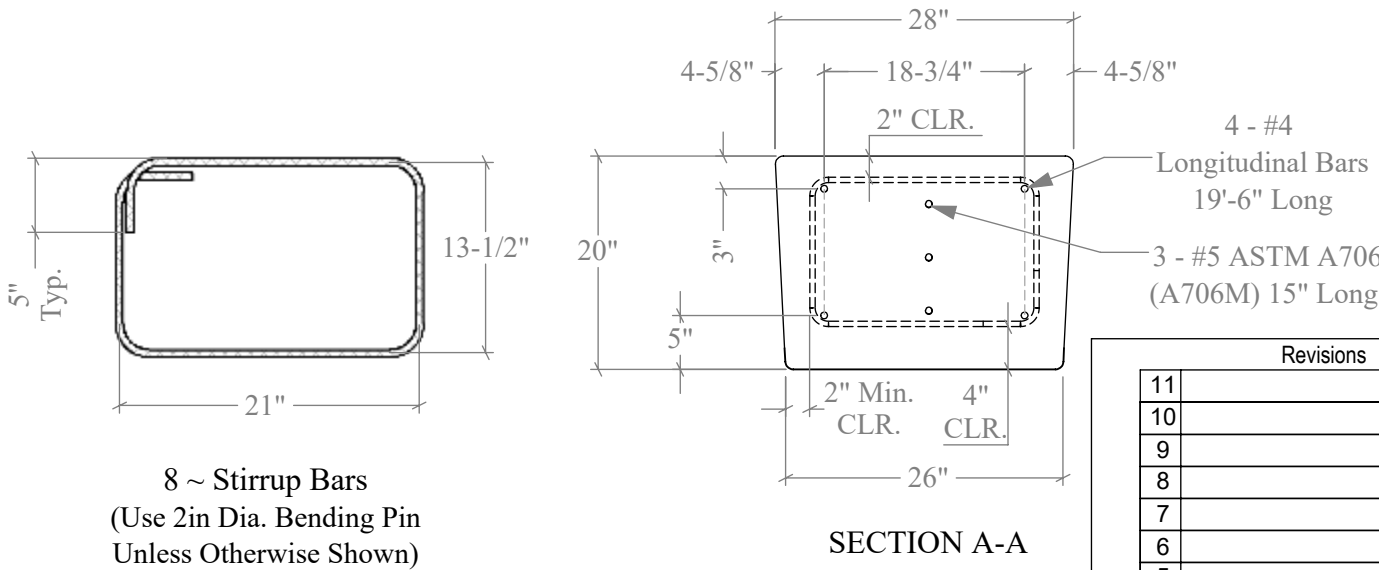
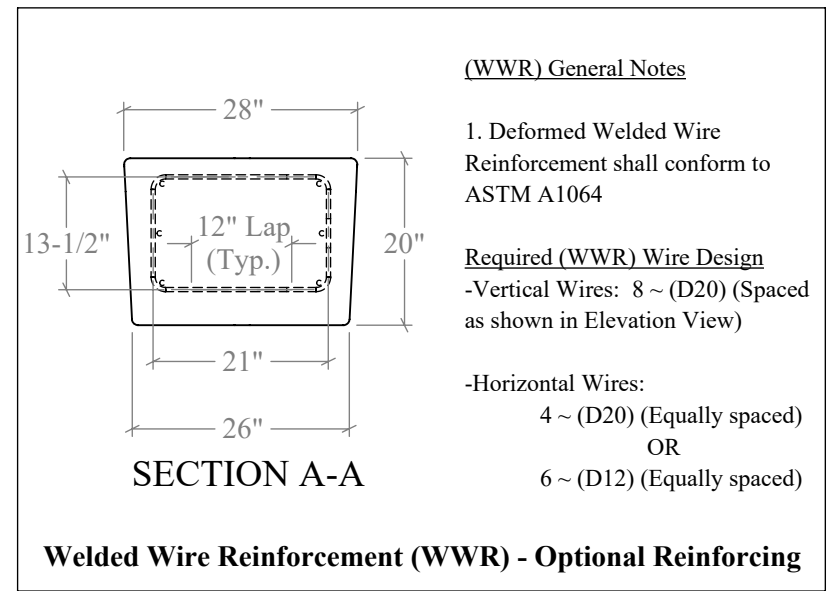
A transition piece between a J-J Hook Barrier and another successfully tested connection is acceptable

Notice: This product contains proprietary features which are protected by intellectual property rights under the laws of any jurisdiction

Provide barrier edges with a chamfer or a tooled radius as required.

Welded Wire Reinforcement (WWR) may be used in lieu of conventional reinforcement, and shall meet the requirements shown or equivalent.

Deflection:
Static Deflection = NA
Dynamic Deflection = NA

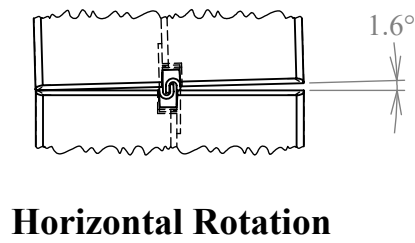
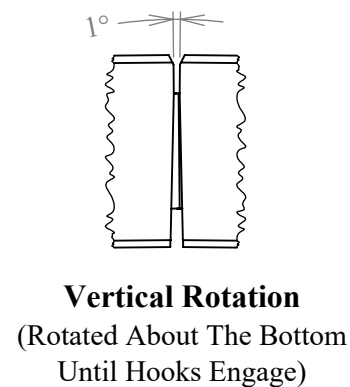
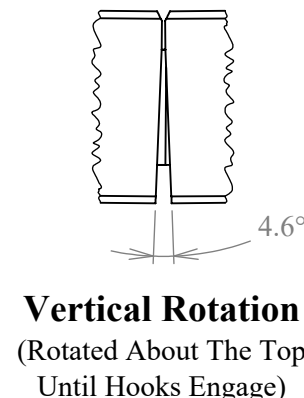
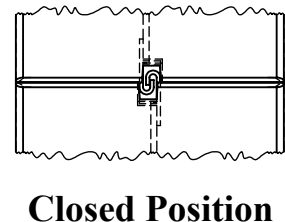
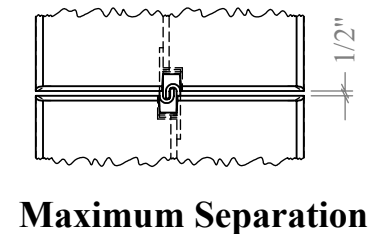
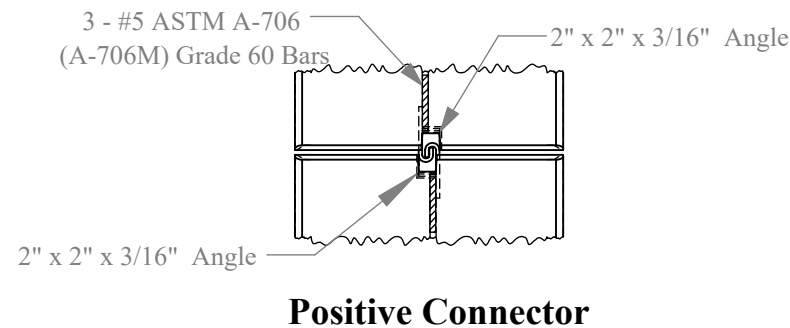
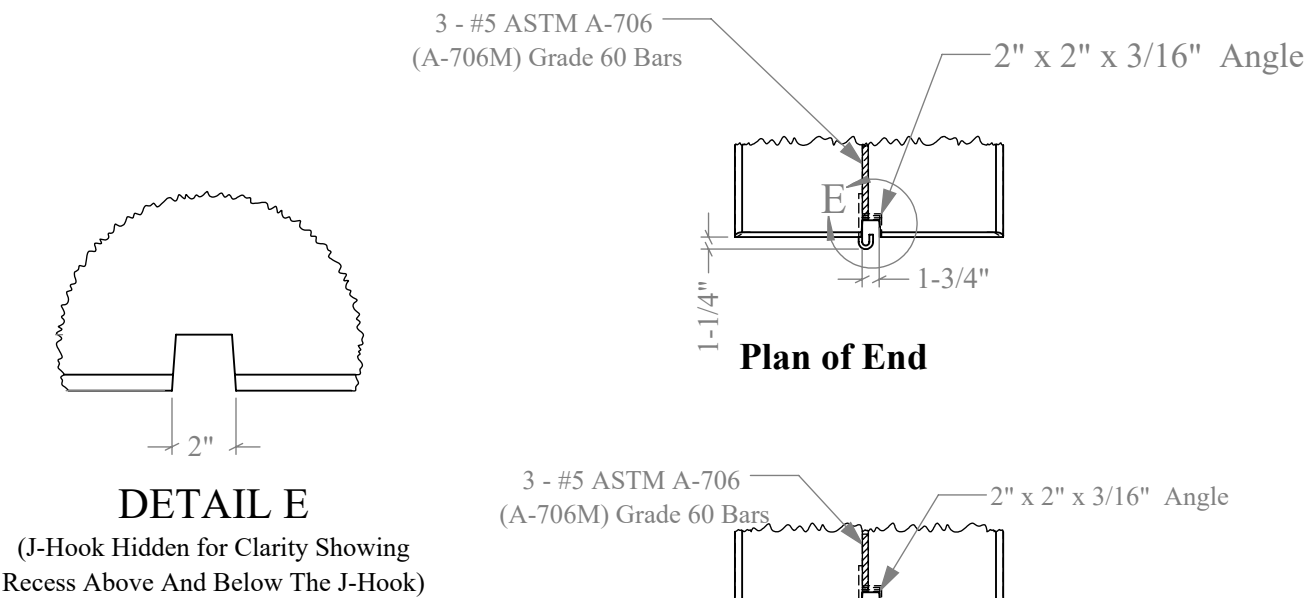
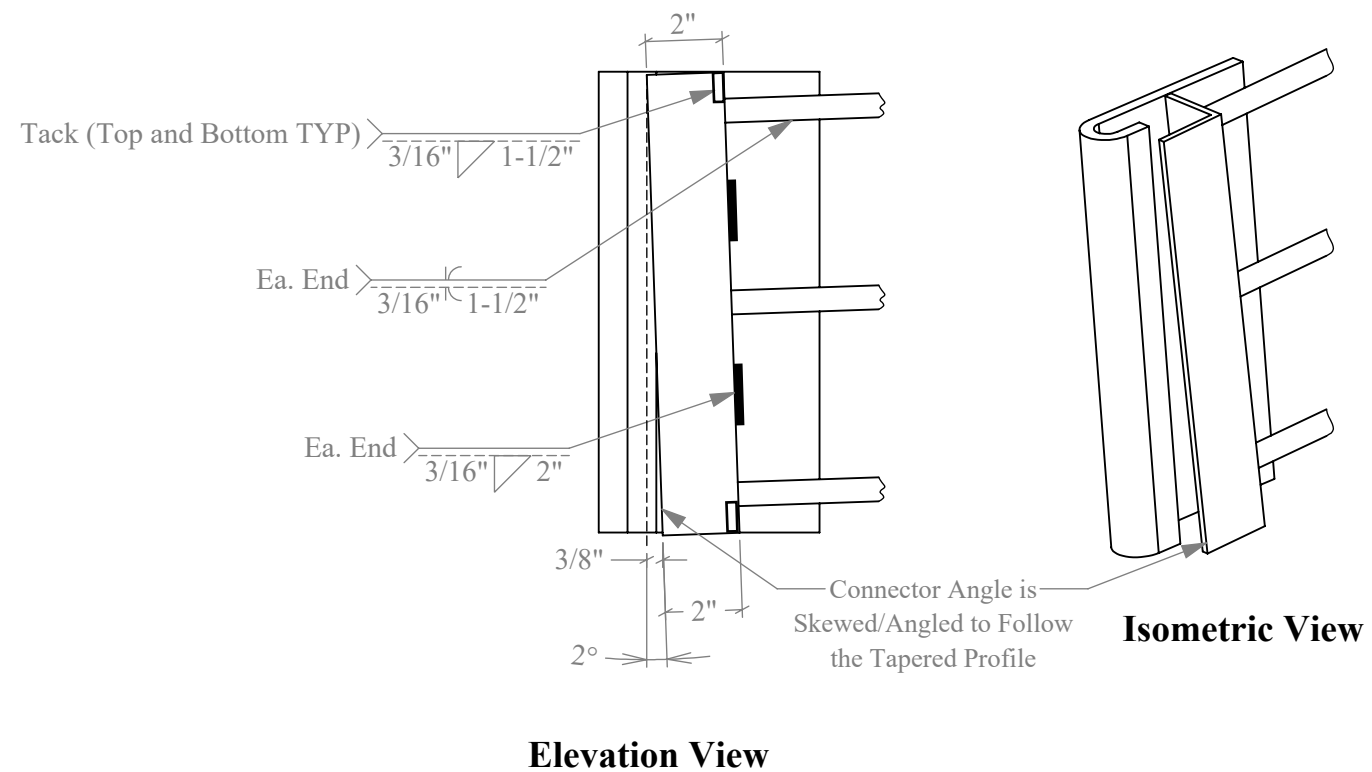
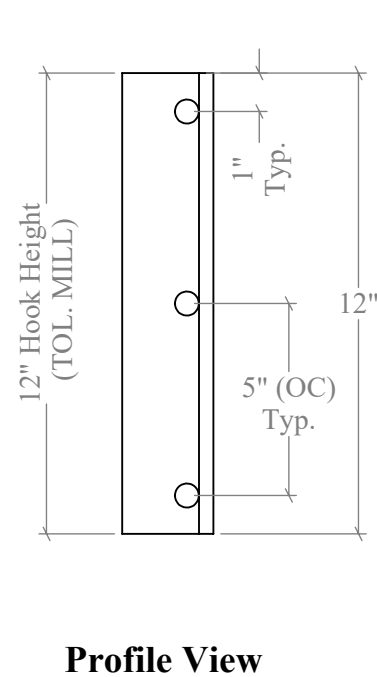
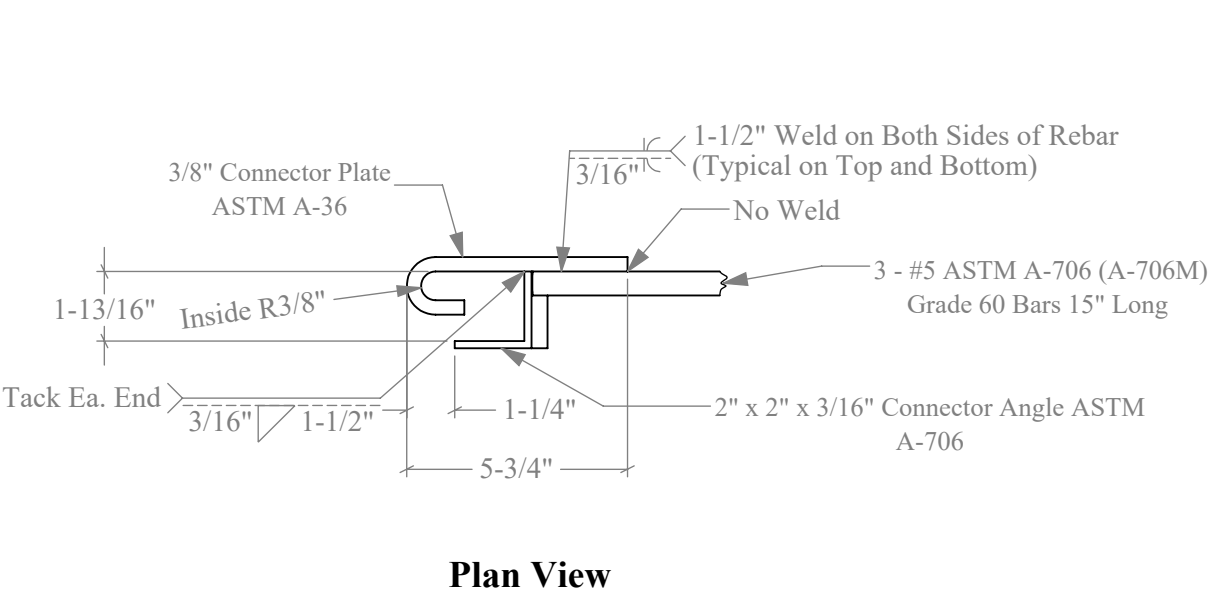


QTY	Material List
4	Deflection Limiters Per Barrier
2	J-Hook Connector Plates (with 1'-3" rebar welded to each)
8	#4 Stirrups Per Barrier
4	#4 Longitudinal Bars 19'-6" Long
1	WWF (see Section View A-A)

Concrete CY: 2.69
Weight: 10,900 lbs

Revisions		EASI SET WORLDWIDE	
11		5119 Catlett Rd., - Midland, VA 22728 - info@EasiSet.com	
10		www.EasiSet.com - 800-547-4045 - Fax 540-4392541	
9		APPROVED PLANT	
8		MANUFACTURER	
7		J-J HOOKS LOW-PROFILE CONCRETE BARRIER (MASH)	Ref. No.
6			Last Rev.
5		DWG No. -	JOB No. --
4		DRAWN BY: TDS	DATE: 7/25/2022
3		CHECKED BY: SMM	DATE: 7/25/2022
2		APPROVED BY:	DATE:
1			

J-J Hook LPCB - Component Details



Revisions		<div><div><div>EASI SET</div><div>WORLDWIDE</div></div><div>5119 Catlett Rd.,- Midland, VA 22728 - info@EasiSet.com www.EasiSet.com - 800-547-4045 - Fax 540-4392541</div></div>		
11		APPROVED PLANT		
10				
9		MANUFACTURER		
8				
7		J-J HOOKS LOW-PROFILE CONCRETE BARRIER (MASH)		
6				
5		DWG No. -		